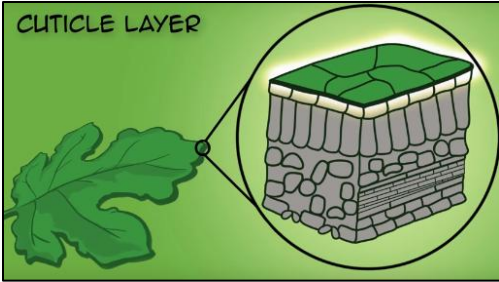


Specialized Cells

Which of the following describes a specialized cell?

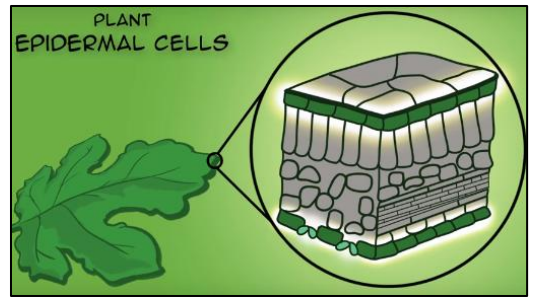
- a. A special agent cell
- b. A super cell that does important tasks
- c. A cell that has a structure that suits its function (form fits function)

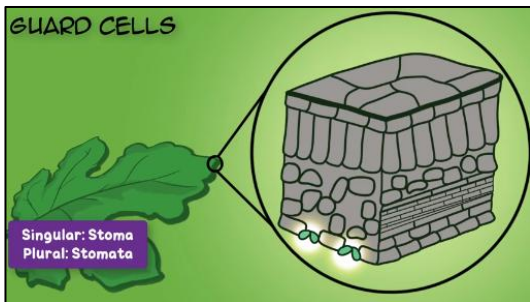
Specialized Plant Cells



What function does a cuticle cell serve and how does its form fit its function?

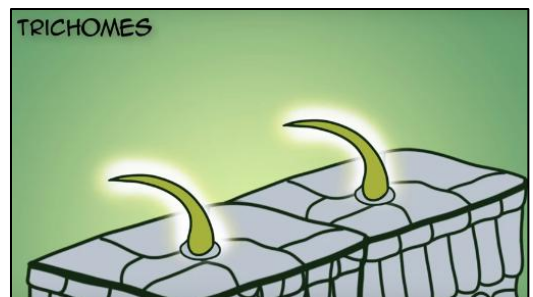
What function does an epidermal cell serve and how does its form fit its function?

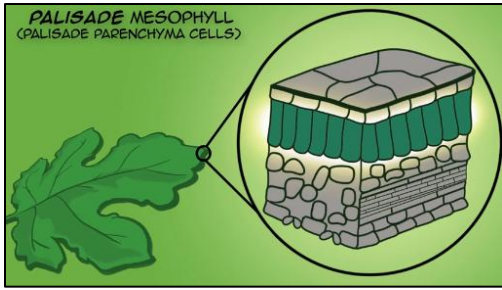




What function does a guard cell serve and how does its form fit its function?

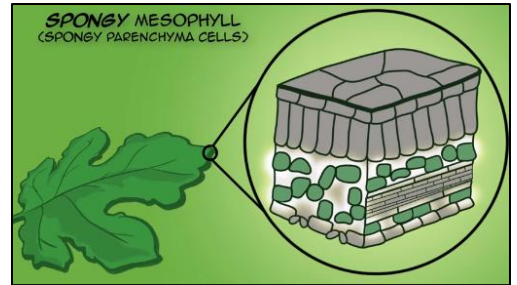
What function does a trichome cell serve and how does its form fit its function?

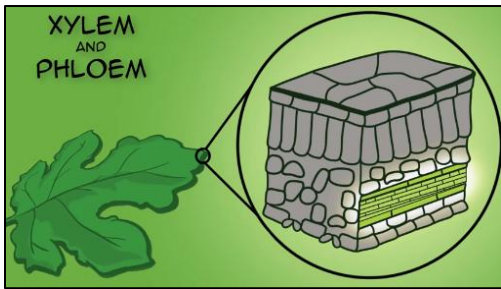




What function does a palisade mesophyll cell serve and how does its form fit its function?

What function does a spongy mesophyll cell serve and how does its form fit its function?

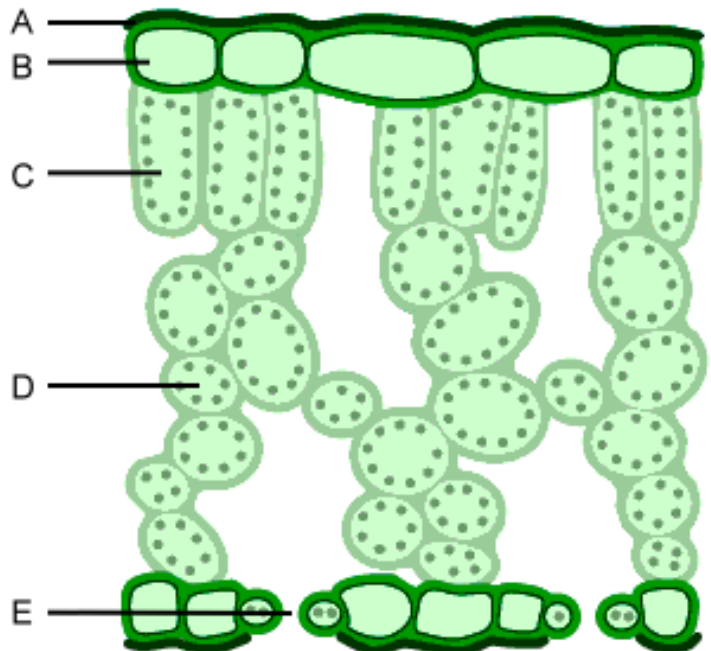




What functions do xylem and phloem cells serve and how do their forms fit their functions?

Label the cells in the cross section of the leaf:

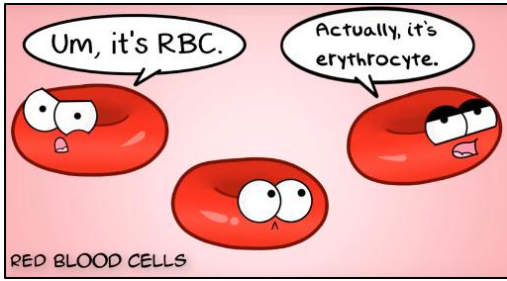
- A. _____
- B. _____
- C. _____
- D. _____
- E. _____



What do the dots in C and D represent?

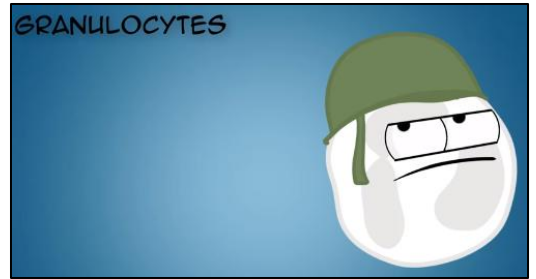
What is a stoma and what function does it serve?

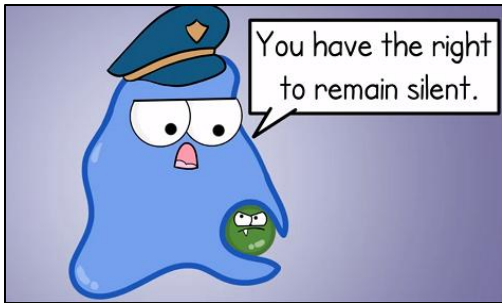
Specialized Animal Cells



What function does a red blood cell serve and how does its form fit its function?

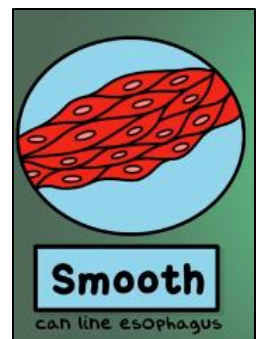
What function does a granulocyte white blood cell serve and how does its form fit its function?

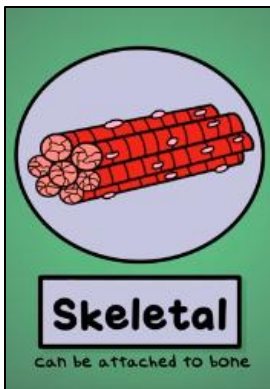




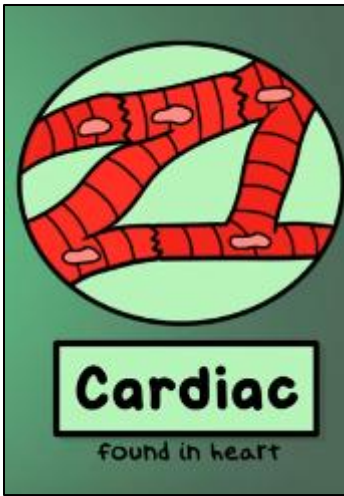
What function does a phagocyte white blood cell serve and how does its form fit its function?

What function does a smooth muscle cell serve and how does its form fit its function?





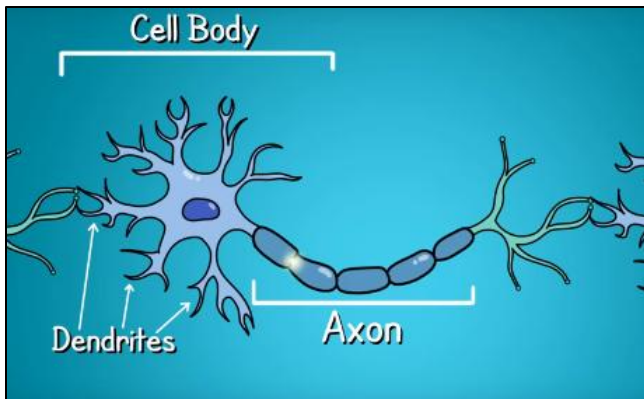
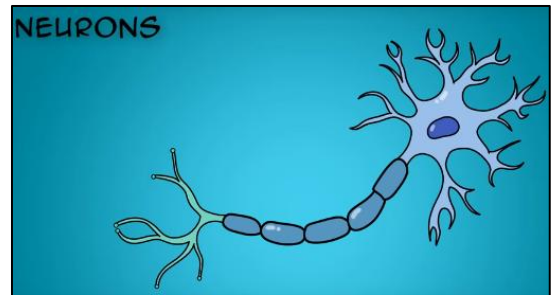
What function does a skeletal muscle cell serve and how does its form fit its function?



What function does a cardiac muscle cell serve and how does its form fit its function?

What organelle do muscle cells have more of, than other cells, and why? _____

What function does a neuron cell serve and how does its form fit its function?



What function does the dendrite part of cell serve?

What function does the axon part of the cell serve?

How long can a neuron cell be? _____
