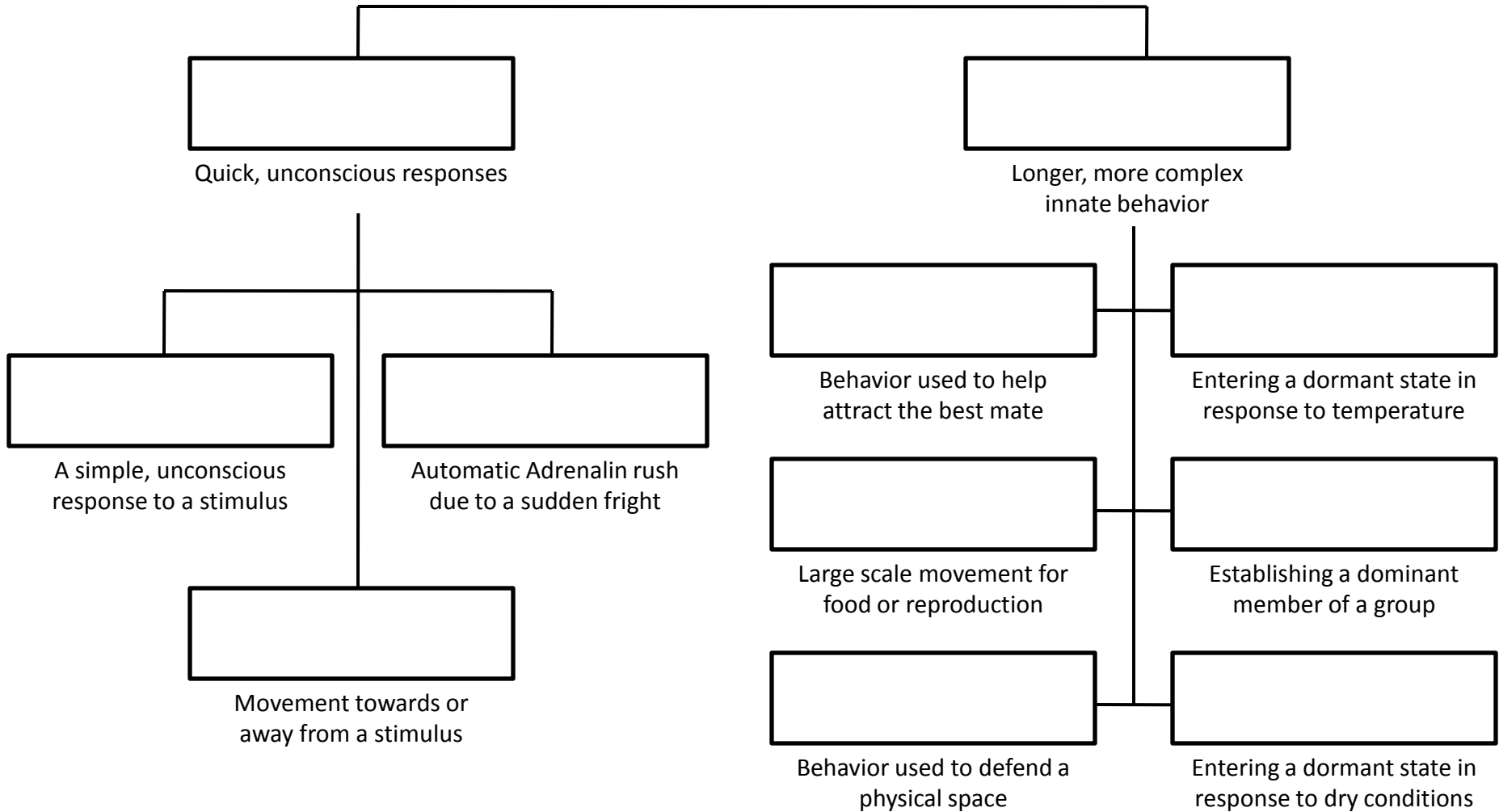


# Animal Behavior Concept Map

**Directions:** Write the name of the behavior in the box above of its description: Instinct, Automatic, Reflex, Dominance Hierarchy, Courtship, Fight or Flight, Territorial, Taxis, Hibernation, Estivation, Migration.

## Innate Behavior

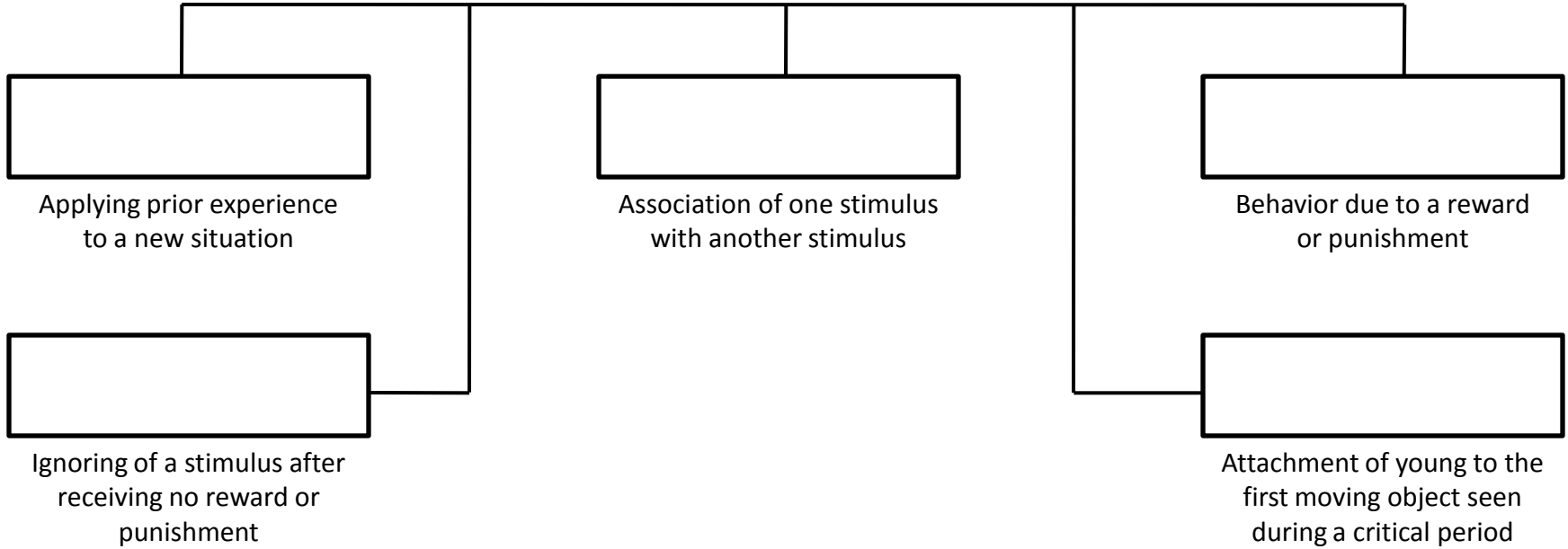
Behavior that is genetically inherited and does not require experience



Place the following terms in the boxes: Imprinting, Habitation, Operant Conditioning, Classical Conditioning, Habituation,

## Learned Behavior

Requires prior experience



## Terms

**Directions:** Write the following terms near their definitions:  
pheromones, stimulus, response, behavior.

Anything an animal does in response to a stimulus

Anything that directly influences the activity of an organism

Chemicals released as a form of communication

A reaction to a specific stimulus

## Social Behavior

**Directions:** Circle the social behaviors listed below

Dominance Hierarchy

Hibernating

Schools of Fish

Habituation

Wolf Pack

Courtship

Herding

Reflex

Birds Roosting

Conditioning

Waggle Dance

Estivation