

# Animal Behavior

Behavior is the way an organism reacts to stimuli in its environment



Many behaviors are essential to survival and reproduction



Behavioral traits can be inherited

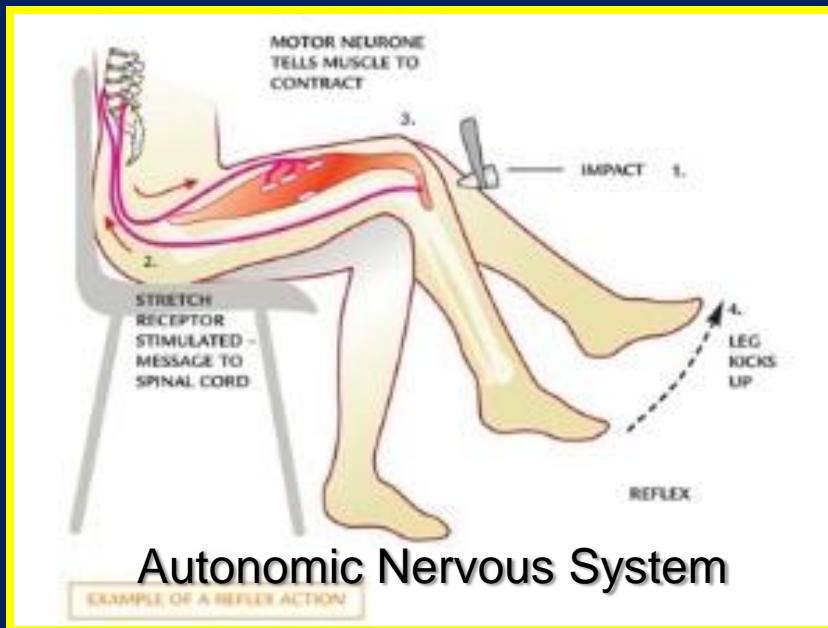


Natural selection helps beneficial traits spread through populations



# Innate Behavior

Innate behaviors, also called instincts, are inherited behaviors that require no previous experience



## Reflex

Automatic response that requires no thought

# Suckling

Reflex response  
when roof of  
mouth is touched



# Fight or Flight

Increase in adrenaline  
resulting in a boost of  
energy when startled

# Taxis

Response towards or away from a stimulus



Positive Photo-taxis

## Photo-taxis

Response towards or away from light



Negative Photo-taxis

## Chemo-taxis

Response towards or away from chemicals

Pheromones



# Learned Behavior

Learned behaviors are acquired through experience and allow animals to adapt to changes in their environment



# Habituation

Process by which an animal decreases or stops its response to a repetitive stimulus that neither rewards nor harms the animal



# Classical Conditioning

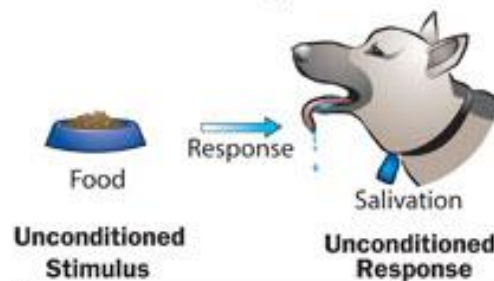
When a certain stimulus begins to produce a particular response usually through association with a positive or negative experience



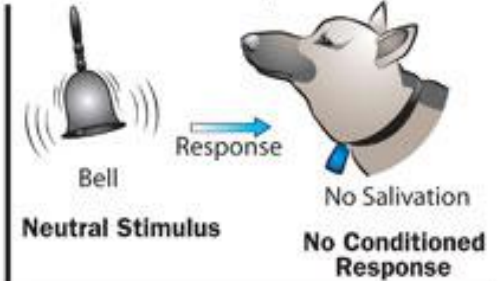
Pavlov's Dog

## How Dog Training Works

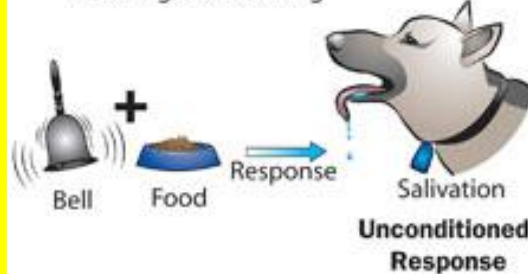
1. Before Conditioning



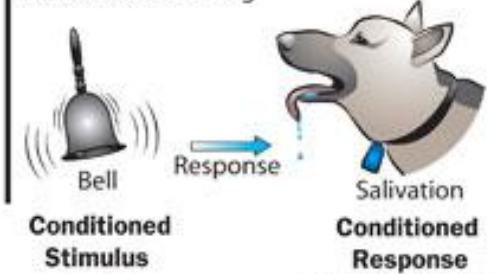
2. Before Conditioning



3. During Conditioning



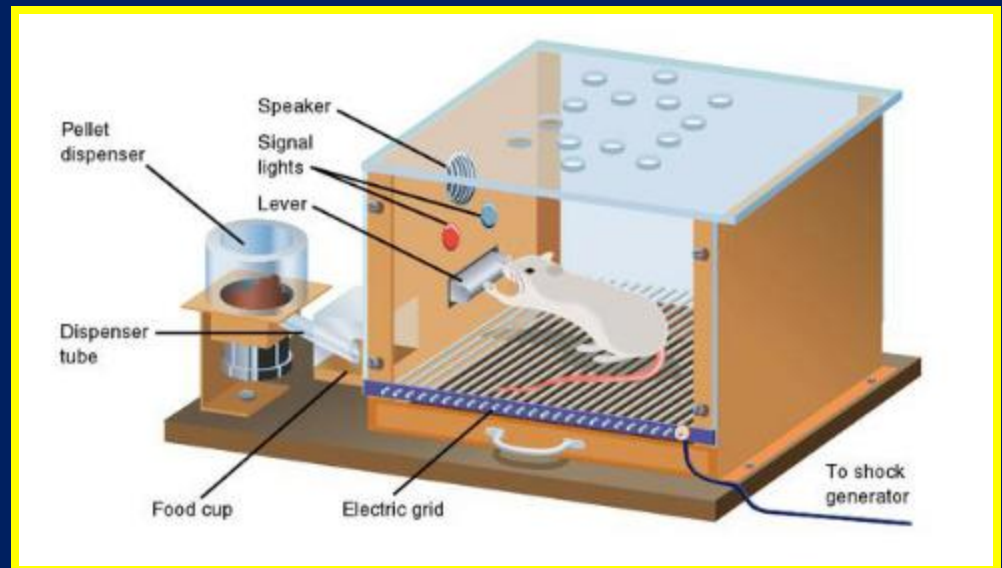
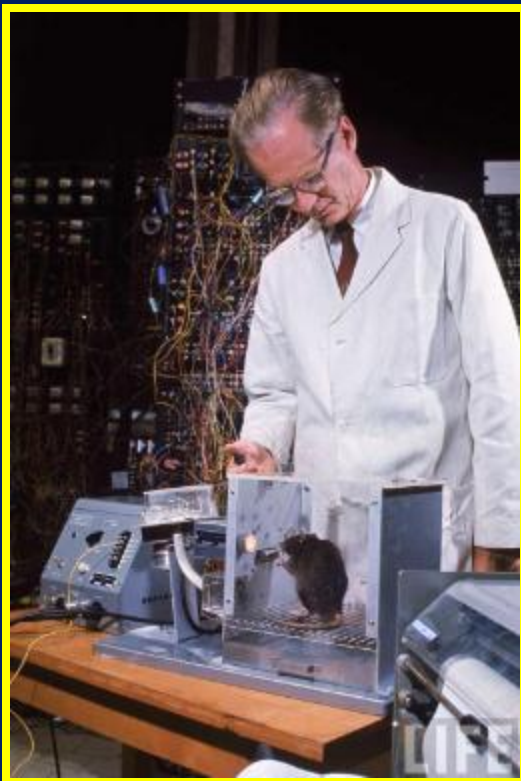
4. After Conditioning





# Operant Conditioning

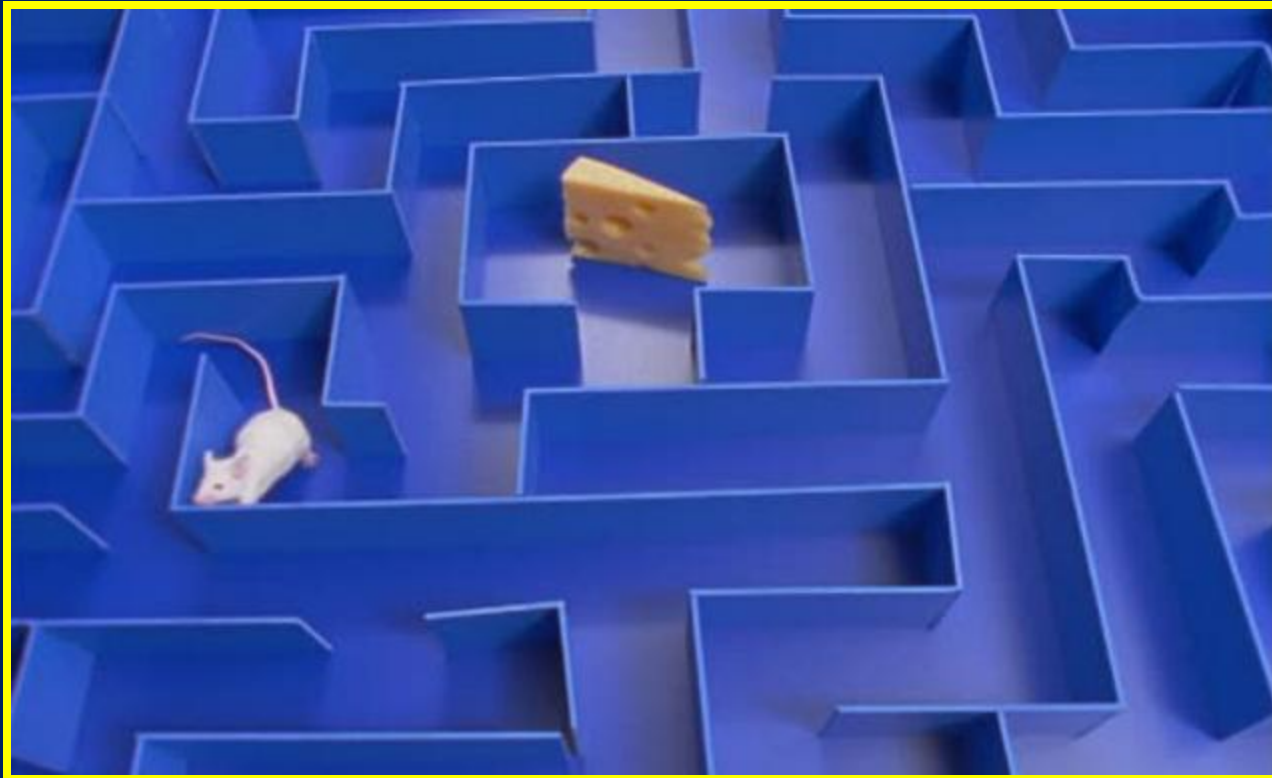
When an animal learns to behave in a certain way through repeated practice, to receive a reward or avoid a punishment



Skinner Box

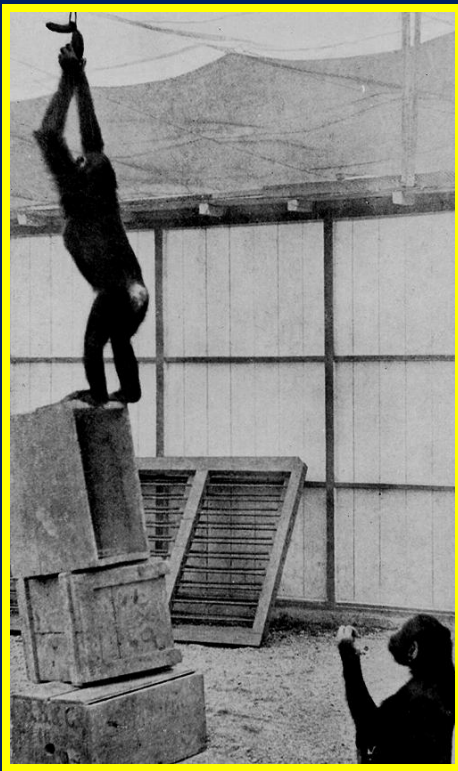
# Operant Conditioning

Operant conditioning is also referred to as a form of trial and error learning



# Insight Learning

Also called reasoning, insight learning when an animal applies something it has already learned to a new situation



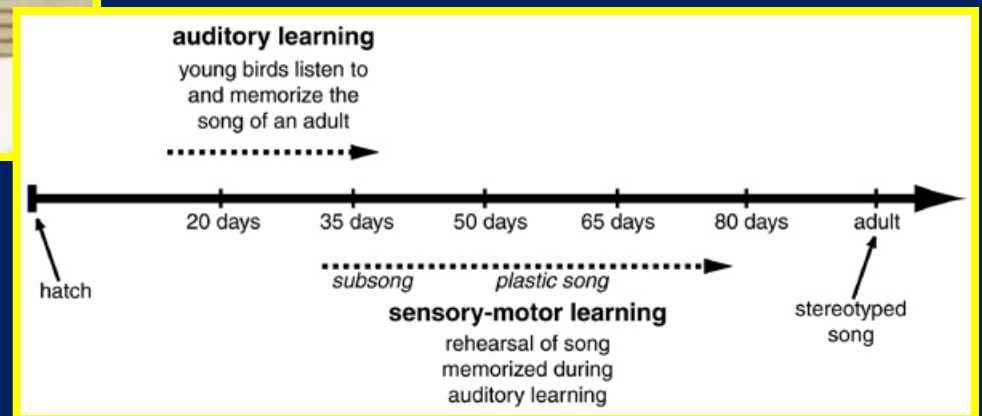
# Complex Behaviors

Complex behaviors combine both innate and learned behaviors



## Zebra Finch

Innate – desire to sing  
Learned – species' song



# Imprinting

Occurs when an animal follows the first moving object they see during a critical period in their early lives



**Innate**  
Desire to follow

**Learned**  
What to follow



# Operation Migration

