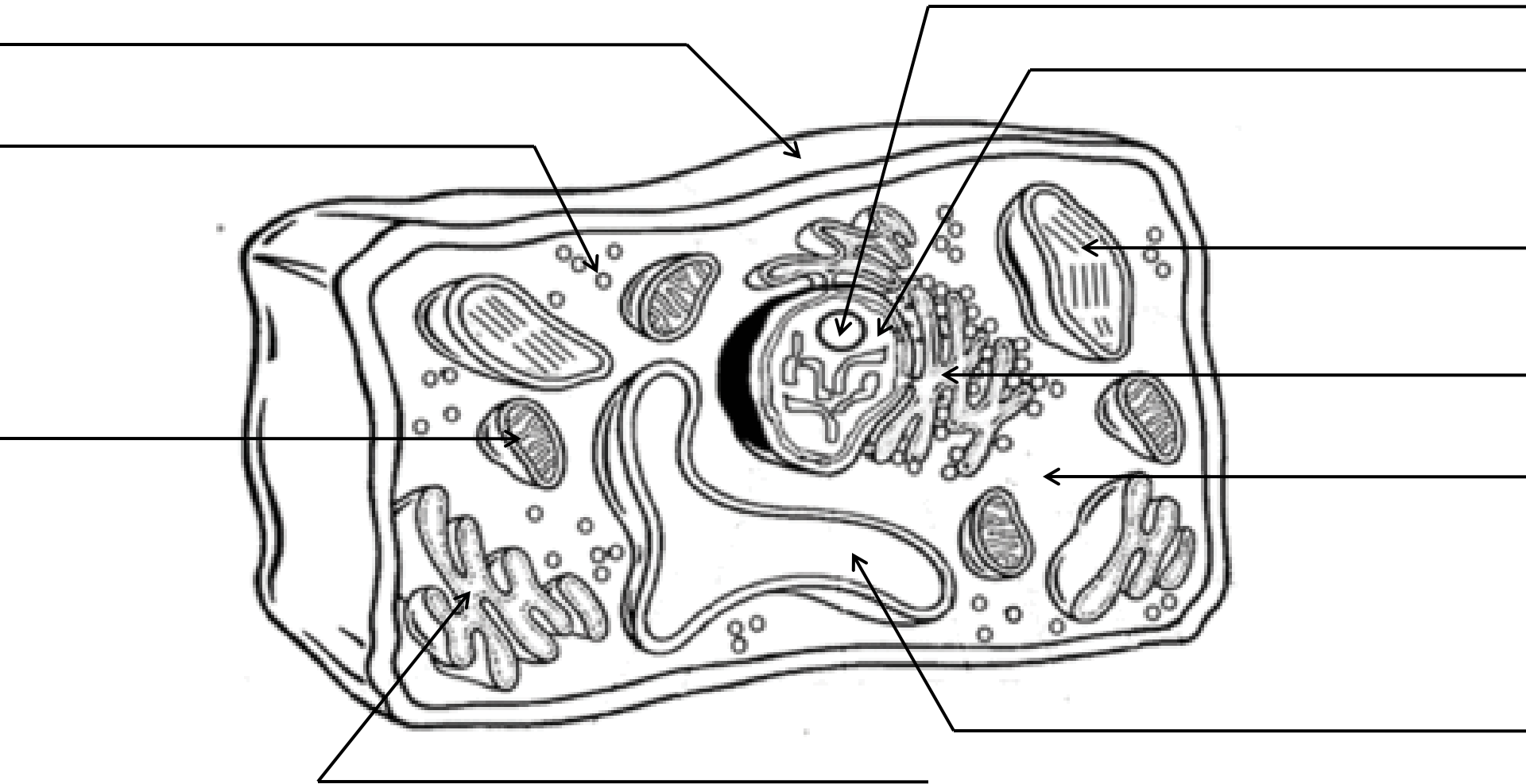


Name _____

Date _____

Labeling Cell Structures and Organelles

Label the different parts of the cell with the following terms: Cell Wall, nucleus, ribosome, mitochondria, chloroplast, vacuole, golgi apparatus, nucleolus, E.R. and cytoplasm



Label the different parts of the cell with the following terms: cell membrane, nucleus, ribosome, mitochondria, vacuole, golgi apparatus, nucleolus, E.R. and cytoplasm

