

RQ Ecosystems

Name: _____

Date: _____

1. Which example describes an abiotic factor that could impact the diversity of an ecosystem?
 - A. An increase in prey can impact the number of predators in an ecosystem.
 - B. The introduction of an invasive species can change the amount of available resources in an ecosystem.
 - C. An increase in the amount of acid rain can change the pH of the soil in anecosystem.
 - D. The competition for food can impact the survival rate between members of the same species in an ecosystem.

2. Salt concentration, water temperature, plankton, and the whale shark might all be used in a description of an ocean
 - A. climate. B. food web.
 - C. ecosystem. D. population.

3. How does light, temperature, and soil composition influence *most* land ecosystems?
 - A. They cause the ecosystem to become extinct.
 - B. They determine the types of plants and animals in the ecosystem.
 - C. They cause water in the ecosystem to become polluted.

4. Why can frogs and snakes live in the same garden?
 - A. Both keep weeds out of the garden.
 - B. Both help different plants to grow.
 - C. Both occupy different niches.
 - D. Both compete for water.

5. All living and nonliving things that surround an animal are part of its
 - A. food chain. B. life cycle.
 - C. ecosystem. D. atmosphere.

6. Corals are small marine organisms that live in groups and make hard outer skeletons to protect their bodies. Over time, these outer skeletons can build up to make large coral reefs that provides a wide range of habitats for other aquatic organisms.

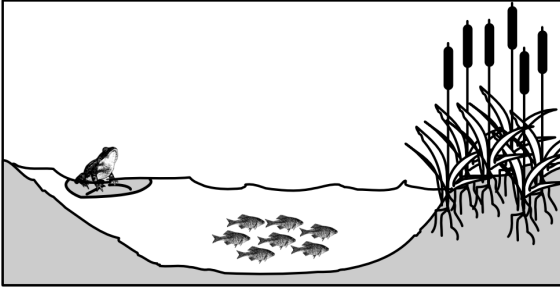
Which of the following term is used to describe the role coral play in its ecosystem?

 - A. Biotic factor. B. Abiotic factor.
 - C. Habitat. D. Niche.

7. *All* members of one species that live in a small geographic area make up one—
 - A. phylum. B. community.
 - C. population. D. ecosystem.

8. Which sequence shows increasing ecological levels of organization?
 - A. organism, population, community, ecosystem
 - B. ecosystem, population, organism, community
 - C. community, ecosystem, population, organism
 - D. population, organism, ecosystem, community

9.

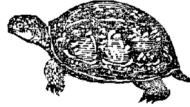


Which of these belongs in the ecosystem above?

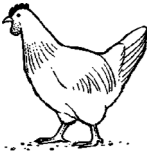
A.



B.



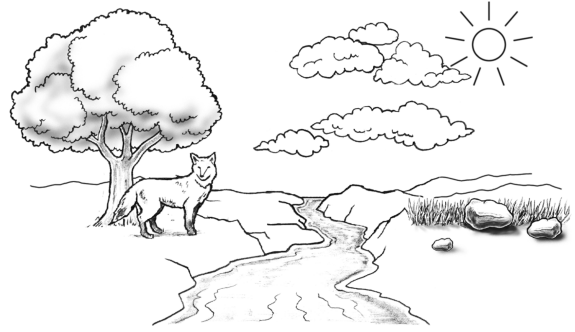
C.



D.



10. Use the picture below to answer the following question.



Which of these lists *only* biotic factors of this ecosystem?

A. fox, tree, grass

B. sun, stream, cloud

C. cloud, grass, rock

D. stream, cloud, fox